



Ash Villa School

PROSPECTUS

ACADEMIC YEAR

2016 - 2017



HEADTEACHER'S MESSAGE

I hope that you find the information in this prospectus useful. We are a Lincolnshire County Council Special Hospital School for 11 to 18 year olds who are inpatients on the Ash Villa hospital unit.

During a young person's admission we provide on-site support at Ash Villa. We can also provide support for a young person to reintegrate back to their current educational establishment during their admission.

Our aim is to provide a continuation of education for each student and our school environment and teaching staff aim to enable each student to feel safe, supported, valued and respected.

For those young people accessing education prior to admission we will liaise with their school or college to identify the best way to support them with their current studies. For those young people not in education at the time of admission we offer a variety of courses that the young person can take during their admission. Each admission each student receives an individual timetable specific to their particular needs, with the provision to attend school full-time.

Ash Villa School also provides educational activities off-site as well as utilising a wide range of visitors to enhance the variety of activities young people can access during their admission.

If you have any questions about the school please telephone me on 01529 488066 or email: enquiries@ashvilla.lincs.sch.uk heading your message School Enquiry.

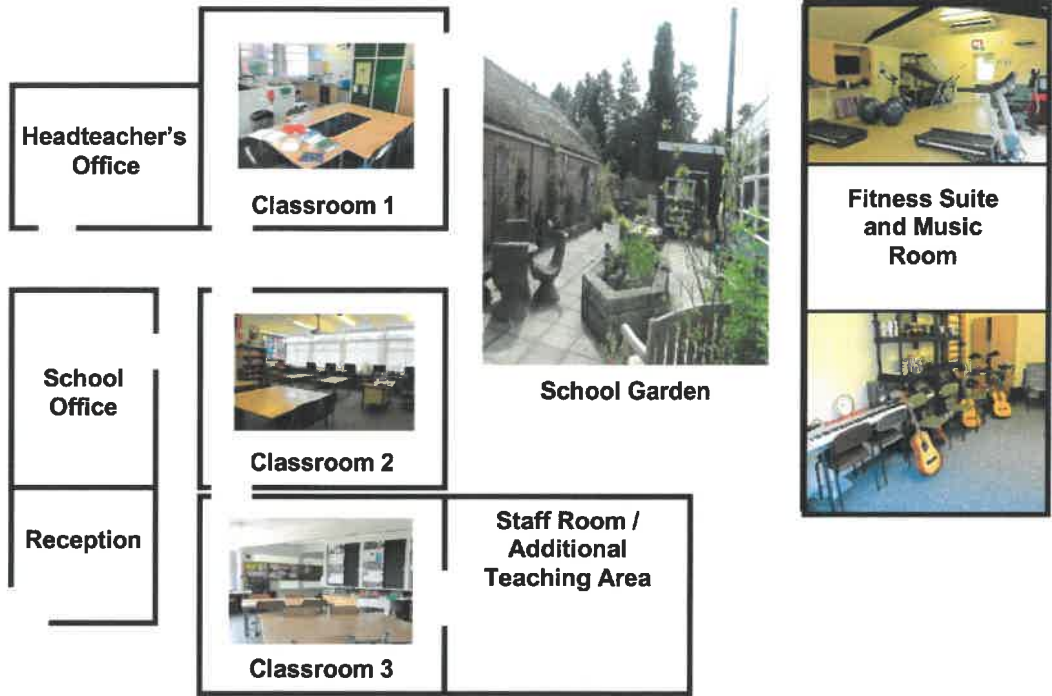


Mr Leigh Bentley
Headteacher

CONTENTS

	Page
Map of the School	3
About the School	4
School Staff	5
Governing Body	5
School Photos	6
The Curriculum	7
Typical Day and Example Timetable	8
Places Visited	10
Student Voice	11
Emotional Health and Well-Being	12
Local Offer and SEN Information Report	12
Complaints	12
Governing Body	13
Contact Details	13

MAP OF THE SCHOOL



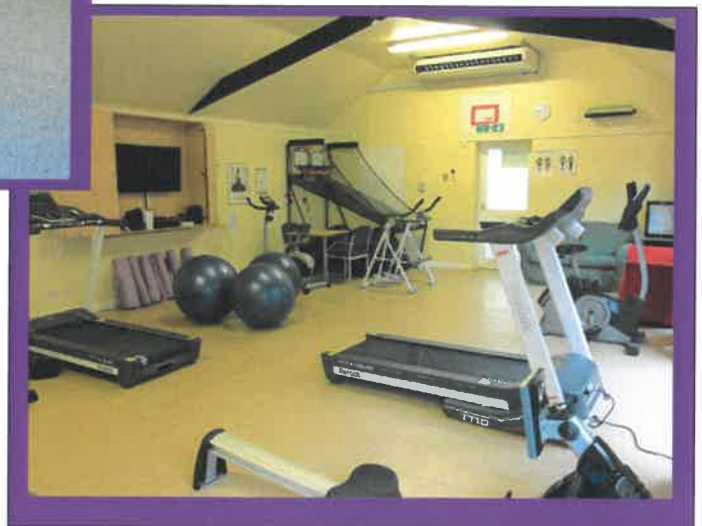
ABOUT THE SCHOOL

- ☛ Ash Villa School is funded by Lincolnshire County Council and provides education for young people who are admitted to the Adolescent Mental Health Services Inpatient Unit.
- ☛ Admission to the school is determined by the Headteacher following discussions with the multi-disciplinary team at Ash Villa.
- ☛ Each young person will be on the roll of Ash Villa School (either as their main or subsidiary school) until discharge from the Inpatient Unit.
- ☛ The school is recognised by the Department for Education as a Group 2 Hospital Special School. The Headteacher and staff are accountable to the school's Governing Body which includes NHS staff, parents and members of the local community.
- ☛ The school offers a curriculum in Key Stages 3, 4 and 5. Pupils at Key Stage 4 are supported, where appropriate, in working towards and sitting GCSE and other examinations. Pupils at Key Stage 5, are supported, where appropriate, in working towards and sitting AS / A Levels and other accredited qualifications.
- ☛ The school is well resourced with a high staff : pupil ratio. All pupils follow individualised learning programmes. The school accesses a variety of visitors to enhance delivery of the curriculum.
- ☛ The ethos of the school is characterised by respect, understanding, communication and the development of responsibility. The safety of everyone in school is considered to be of paramount importance and is essential for effective teaching and learning to take place.
- ☛ The school is set in a quiet rural location and the accommodation comprises of three classrooms, a fitness suite, a music room, outdoor area, an all weather court and a school garden.

SCHOOL STAFF

<p>Leigh Bentley, Headteacher</p> <p>Subject responsibility: PE</p>
<p>Helen Raeburn, Class Teacher</p> <p>Subject responsibilities: English, Food Technology, PHSE, CEIAG, Citizenship, Geography, History, Design Technology, Modern Foreign Languages, Music and Religious Education</p>
<p>Brian Wooldridge, Class Teacher</p> <p>Subject responsibilities: Maths and Science</p>
<p>Sue Makevit, Post-16 Class Teacher</p> <p>Responsible for overseeing post-16 education</p>
<p>Jennifer Harman, Cover Teacher</p>
<p>Gemma Bendell-Whittaker, Cover Teacher</p>
<p>Alicia Tetley, Higher Level Teaching Assistant</p>
<p>Dawn Smith, Senior School Administrator</p>

SCHOOL PHOTOS



THE CURRICULUM

Key Stage 3	Key Stage 4	Post-16
Art CEIAG Citizenship Design Technology Drama English Food Education Geography History ICT Maths Modern Foreign Languages Music PHSE Religious Studies Science	Art CEIAG Citizenship Design Technology Drama English Food Education Geography History ICT Maths Modern Foreign Languages Music PHSE Religious Studies Science	Support with A-Level and BTEC courses English and Maths Functional Skills ASDAN Life Skill Challenges Future Learn e-courses

In addition to the above subjects Ash Villa School also endeavours to ensure that student's receive the support and access to resources they require for other subjects taken at Key Stages 3 and 4 and in post-16 education.

A TYPICAL DAY AND EXAMPLE TIMETABLES

8.55 – 9.15	School Walk / Activity
9.15 – 10.30	Morning Meeting / Lesson 1
10.30 – 11.50	Break
10.50 – 12.00	Lesson 2
12.00 – 1.00	Lunch
1.00 – 2.15	Lesson 3
2.15 – 2.30	Break
2.30 – 3.30	Lesson 4

Week 1

Day/Year Group	Lesson 1	Lesson 2	Lesson 3	Lesson 4
Monday/Y7-9	English	Maths	MFL	MFL
Monday/Y10/11	Maths	English	MFL	MFL
Monday/Y12/13	A-level/BTEC/Maths FS or GCSE	A-level/BTEC/English FS or GCSE	A-level/BTEC/ASDAN Life Skill Challenges/Future Learn	A-level/BTEC/ASDAN Life Skill Challenges/Future Learn
Tuesday/Y7-9	Maths	RS	Geography	History
Tuesday/Y10/11	English	Science	Humanities (History/Geography)	Humanities (History/Geography)
Tuesday/Y12/13	A-level/BTEC/English FS or GCSE	A-level/BTEC/Maths FS or GCSE	A-level/BTEC/ASDAN Life Skill Challenges/Future Learn	A-level/BTEC/ASDAN Life Skill Challenges/Future Learn
Wednesday/Y7-9	Science	English	Art	Music
Wednesday/Y10/11	RS	Maths	Art (Art/Music)	Art (Art/Music)
Wednesday/Y12/13	A-level/BTEC/Maths FS or GCSE	A-level/BTEC/English FS or GCSE	A-level/BTEC/ASDAN Life Skill Challenges/Future Learn	A-level/BTEC/ASDAN Life Skill Challenges/Future Learn
Thursday/Y7-9	Citizenship	Maths	Enrichment	Enrichment
Thursday/Y10/11	Science	English	Enrichment	Enrichment
Thursday/Y12/13	A-level/BTEC/English FS or GCSE	A-level/BTEC/Maths FS or GCSE	Enrichment	Enrichment
Friday/Y7-9	English	Science	PE/Tutorial	PE/Tutorial
Friday/Y10/11	Maths	Citizenship	PE/Tutorial	PE/Tutorial
Friday/Y12/13	A-level/BTEC/Maths FS or GCSE	A-level/BTEC/English FS or GCSE	PE/Tutorial	PE/Tutorial

DT to include Food Education, English to include Drama, Citizenship to include SRE, PSHE and CELAG.

Week 2

Day/Year Group	Lesson 1	Lesson 2	Lesson 3	Lesson 4
<i>Monday/Y7-9</i>	<i>Maths</i>	<i>English</i>	<i>Computing</i>	<i>Computing</i>
<i>Monday/Y10/11</i>	<i>English</i>	<i>Maths</i>	<i>Computing</i>	<i>Computing</i>
<i>Monday/Y12/13</i>	A-level/BTEC/English FS or GCSE	A-level/BTEC/Maths FS or GCSE	A-level/BTEC/ASDAN Life Skill Challenges/Future Learn	A-level/BTEC/ASDAN Life Skill Challenges/Future Learn
<i>Tuesday/Y7-9</i>	<i>RS</i>	<i>Maths</i>	<i>History</i>	<i>Geography</i>
<i>Tuesday/Y10/11</i>	<i>Science</i>	<i>English</i>	<i>Humanities (History/Geography)</i>	<i>Humanities (History/Geography)</i>
<i>Tuesday/Y12/13</i>	A-level/BTEC/Maths FS or GCSE	A-level/BTEC/English FS or GCSE	A-level/BTEC/ASDAN Life Skill Challenges/Future Learn	A-level/BTEC/ASDAN Life Skill Challenges/Future Learn
<i>Wednesday/Y7-9</i>	<i>English</i>	<i>Science</i>	<i>DT</i>	<i>DT</i>
<i>Wednesday/Y10/11</i>	<i>Maths</i>	<i>RS</i>	<i>DT</i>	<i>DT</i>
<i>Wednesday/Y12/13</i>	A-level/BTEC/English FS or GCSE	A-level/BTEC/Maths FS or GCSE	A-level/BTEC/ASDAN Life Skill Challenges/Future Learn	A-level/BTEC/ASDAN Life Skill Challenges/Future Learn
<i>Thursday/Y7-9</i>	<i>Maths</i>	<i>Citizenship</i>	<i>Enrichment</i>	<i>Enrichment</i>
<i>Thursday/Y10/11</i>	<i>English</i>	<i>Science</i>	<i>Enrichment</i>	<i>Enrichment</i>
<i>Thursday/Y12/13</i>	A-level/BTEC/Maths FS or GCSE	A-level/BTEC/English FS or GCSE	<i>Enrichment</i>	<i>Enrichment</i>
<i>Friday/Y7-9</i>	<i>Science</i>	<i>English</i>	<i>PE/Tutorial</i>	<i>PE/Tutorial</i>
<i>Friday/Y10/11</i>	<i>Citizenship</i>	<i>Maths</i>	<i>PE/Tutorial</i>	<i>PE/Tutorial</i>
<i>Friday/Y12/13</i>	A-level/BTEC/English FS or GCSE	A-level/BTEC/Maths FS or GCSE	<i>PE/Tutorial</i>	<i>PE/Tutorial</i>

DT to include Food Education, English to include Drama, Citizenship to include SRE, PSHE and CELAG.

PLACES VISITED



HARRY POTTER STUDIOS



PGL CAYTHORPE



THE SHOWROOM, LINCOLN



DODDINGTON HALL 'FAIRYTALE CHRISTMAS'



NATIONAL SPACE CENTRE, LEICESTER

STUDENT VOICE

"I have had such an amazing time at school. The teachers have made me feel so happy and welcome." [Year 11 student]

"The school has given me so much confidence to help me work towards mainstream school." [Year 11 student]

"I will miss you...one thing I've discovered is that 'you've gotta roll with it.' I'll Never forget any of you." [Year 10 student]

Thank you for everything you've done for me. You have been incredibly supportive of me and my school work." [Year 13 student]

"When I first came to Ash Villa I did not want to go to school but once I knew what school was like I loved it." [Year 11 student]

"I wouldn't have got my 6 C's 5 B's and 2 A's without attending Ash Villa school during a difficult time."
Year 11 student

"Thanks for always saying nice things to me when I was down and upset, you always made me feel better." [Year 10 student]

"I cannot express my thanks in a way that honours the work that you have done. In school I have laughed and persevered through the hardest times I have yet faced, only with the help of you guys!"
[Year 11 student]

"Thank you for giving me an education and let me sit my exams...you're all brilliant teachers and really easy to talk to."
[Year 11 student]

"Thank you for everything you've done for me. You have been incredibly supportive of me and my school work."
[Year 13 student]

"You are all such amazing people and thank you for everything you have done for me. & getting me through my maths exam!"
[Year 12 student]

EMOTIONAL HEALTH AND WELL-BEING

Ash Villa School is committed to ensuring that the emotional health and well-being needs of all students and staff are met.

The school adheres to the Enhanced Practice of The Mental Health Standards which ensures, amongst other elements, that:

- there is a named member of staff and the governing body to oversee the provision and effectiveness of emotional health and well-being in the school;
- stereotypes and myths around mental health are challenged;
- the curriculum has opportunities for students to explore and understand their feelings;
- explicit values are included in school policies and there is a positive approach to emotional health and well-being across the whole school community;
- staff receive training around emotional health and well-being;
- students are involved in regularly reviewing provision;
- links exist with a multitude of external agencies

LOCAL OFFER AND SEN INFORMATION REPORT

Information regarding the local offer and SEN information is available to view on the school's website at www.ashvilla.lincs.sch.uk

COMPLAINTS

Should you have a concern or issue about any aspect of the school please contact Mr Bentley, Headteacher to discuss the matter or alternatively if the concern or issue is about the Headteacher please contact Mr Lawlor, Chair of Governors. A copy of the school's Complaint's Policy is available to view on the school's website at www.ashvilla.lincs.sch.uk

GOVERNING BODY

John Lawlor (Chair)	Parent Governor
Edwina Sleight (Vice-Chair)	Parent Governor
Vacancy	Local Authority Governor
Kirsty Talkes	Co-opted Governor
John Webster	Co-opted Governor
Ruth Bampton	Co-opted Governor
Chris Brook	Co-opted Governor
Leigh Bentley	Headteacher Governor
Vacancy	Staff Governor
Dawn Smith	Clerk to Governing Body

CONTACT DETAILS

Headteacher:	Mr L Bentley
School address:	Ash Villa School Willoughby Road Greylees Sleaford Lincs NG34 8QA
Tel:	01529 488066
Email:	enquiries@ashvilla.lincs.sch.uk

For further information please visit our website at: www.ashvilla.lincs.sch.uk